



INFORMATION RELEASE

Office of the Director

ARKANSAS STATE HIGHWAY AND
P. O. Box 2261 – Little Rock, Arkansas
Telephone (501) 569-2227

TRANSPORTATION DEPARTMENT
ArkansasHighways.com
Twitter: @AHTD

Contact:
Danny Straessle/Krista Sides

NR 16-084
April 7, 2016

Maintenance Work on State Highway 365 Spur Requires Overnight Lane Closures

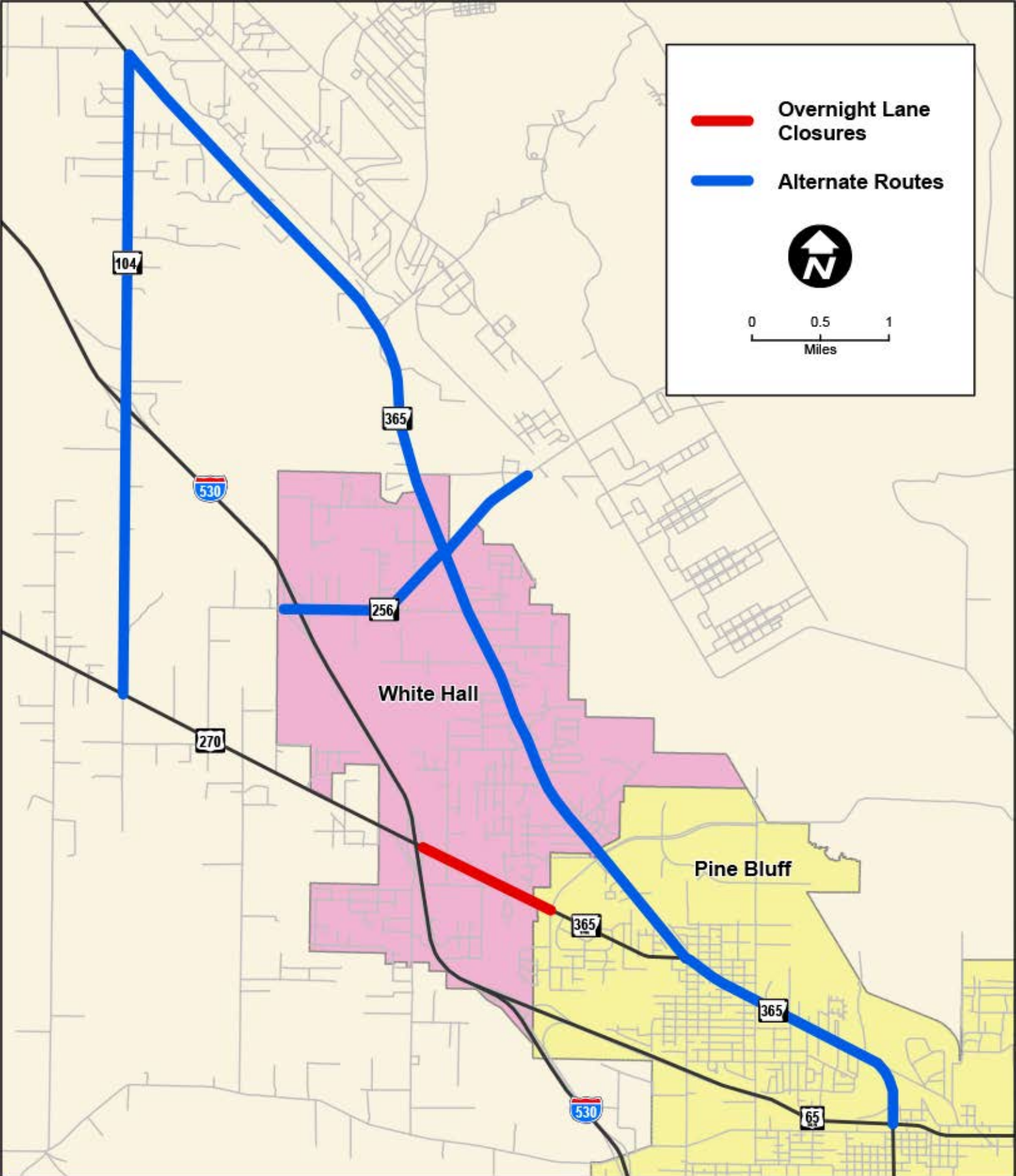
JEFERSON COUNTY (4-7) – Maintenance on State Highway 365S will require overnight lane closures between the Interstate 530 and Jefferson Parkway in White Hall, according to Arkansas State Highway and Transportation Department (AHTD) officials.

The work will require an alternating lane closure starting with the eastbound lanes **between 7:00 p.m. and 5:00 a.m. beginning Sunday, April 10 through Wednesday, April 13**, weather permitting. Once the eastbound lanes are resurfaced, the closure will move to the westbound lanes.

Motorists should consider using State Highway 256/Highway 104, or using State Highway 365 (Martha Mitchell) as alternative routes to avoid traffic backups during the resurfacing. A map is attached for your convenience. Daytime driving (between 6:00 a.m. and 6:30 p.m.) will not be affected by this operation. For additional information, call 870-534-1612 during regular business hours.

Traffic will be controlled with flaggers, barrels and traffic signs. Drivers should exercise caution when approaching and traveling through all highway work zones. Additional travel information can be found at IDriveArkansas.com or ArkansasHighways.com. You can also follow us on [Twitter @AHTD](https://twitter.com/AHTD).





**State Highway 365 Spur
White Hall, Jefferson County**

